



ZRICKS



ZRICKS.COM

PROPOSED RESIDENTIAL VILLAS  
AT NELLANKARAI, CHENNAI.  
FOR ARHAM FOUNDATION PVT.LTD.









FIRST FLOOR PLAN



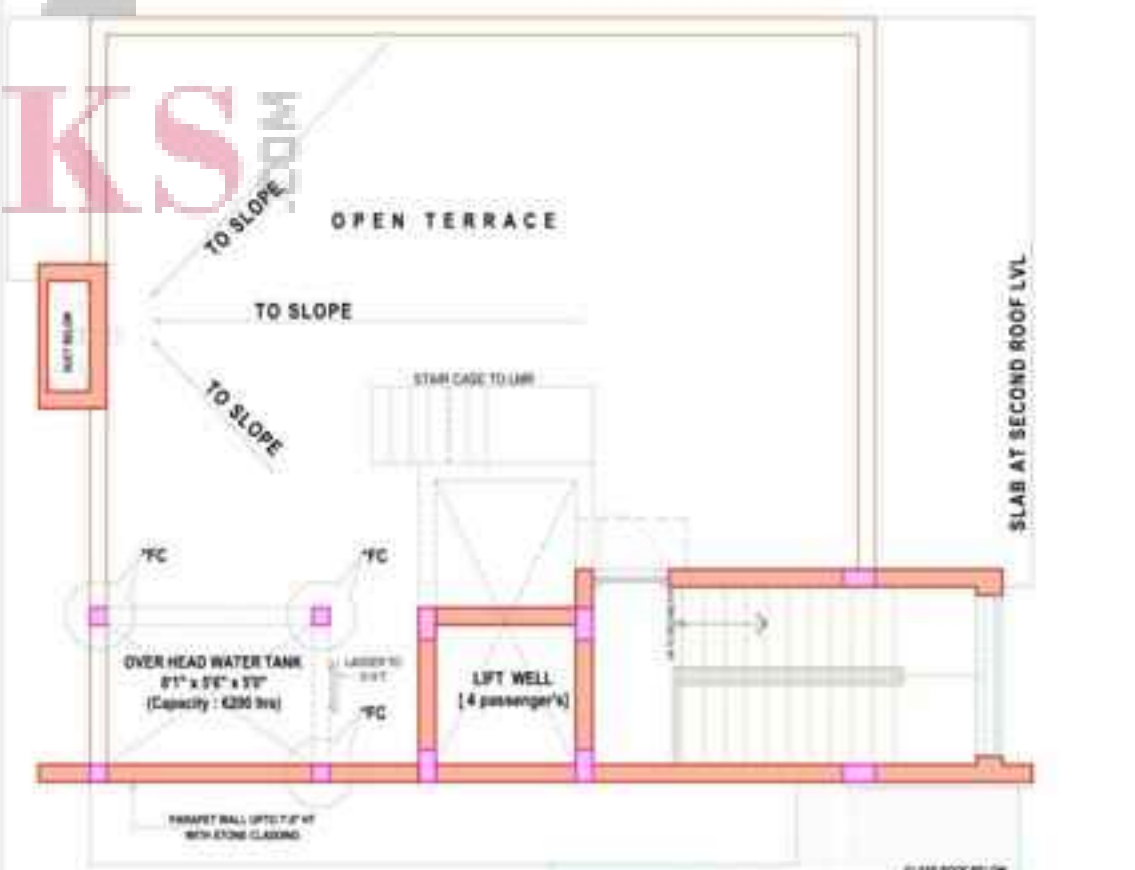
SECOND FLOOR PLAN



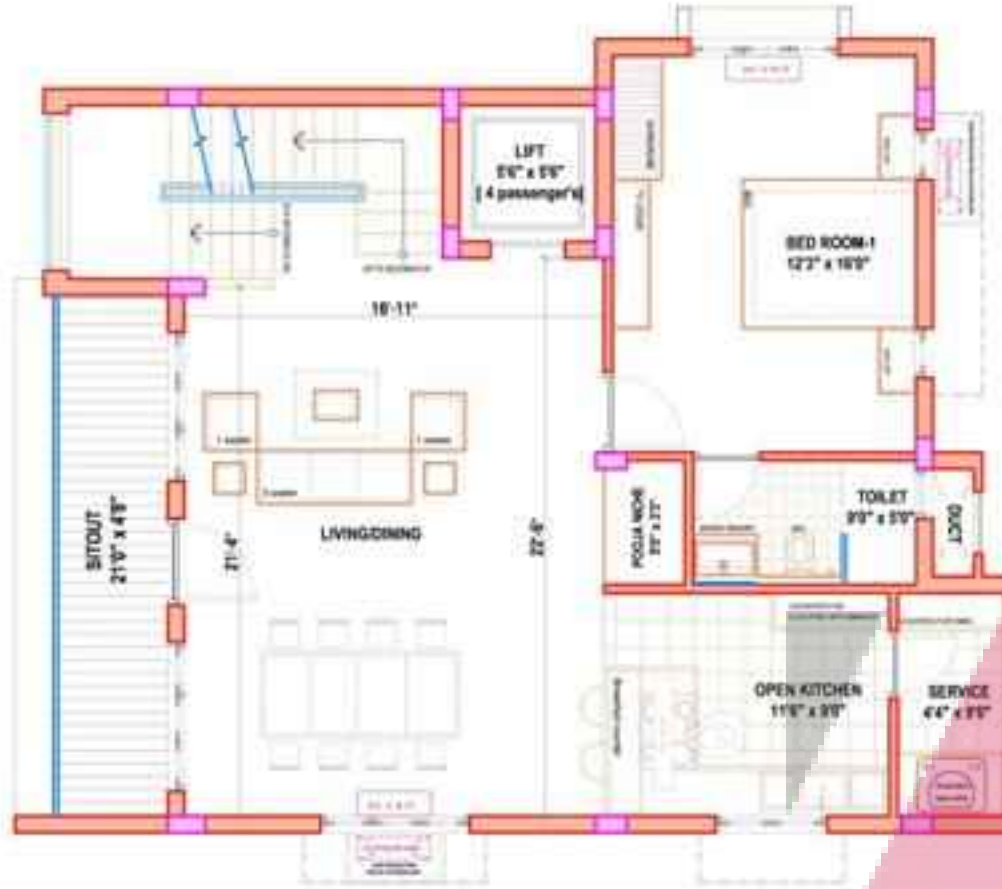
GROUND FLOOR PLAN



TERRACE FLOOR PLAN



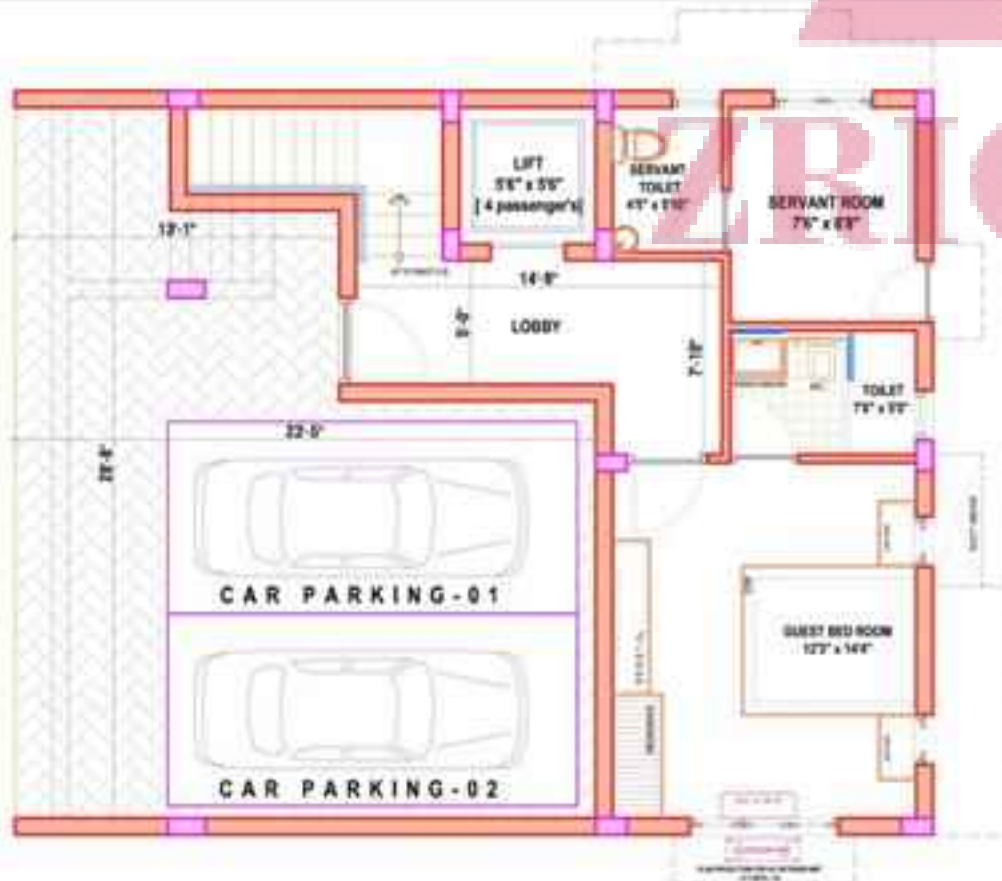
FIRST FLOOR PLAN



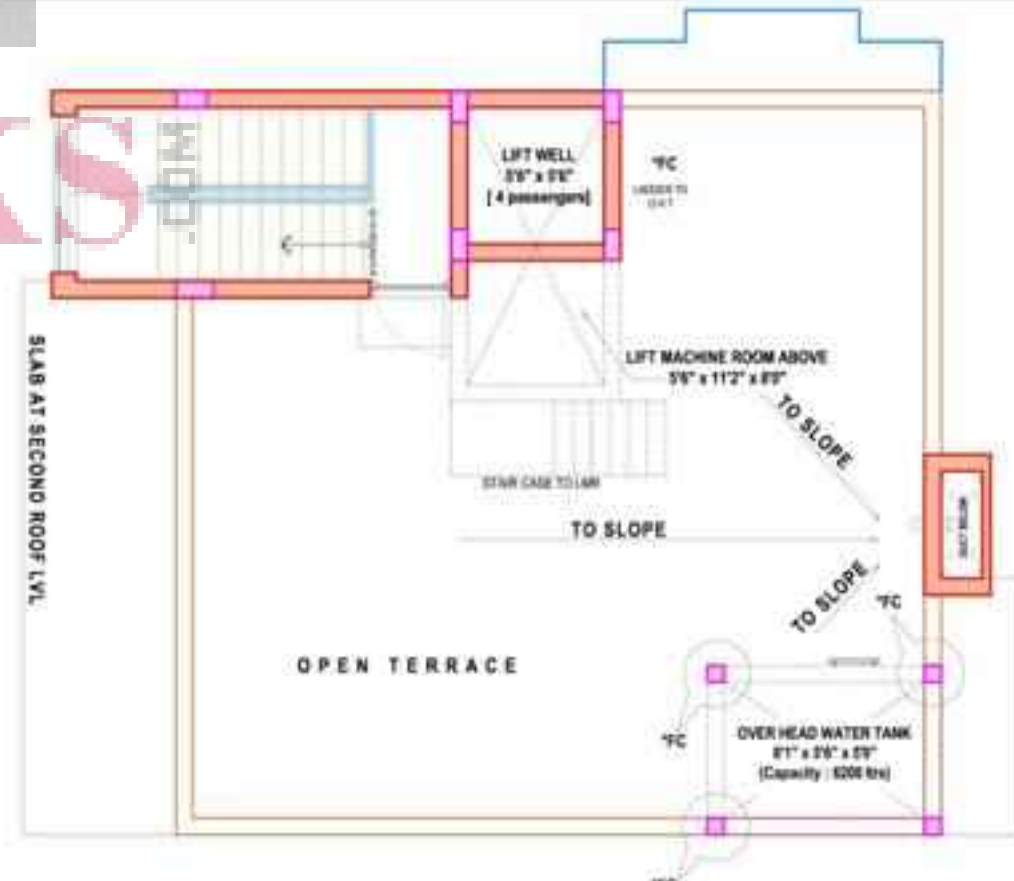
SECOND FLOOR PLAN



GROUND FLOOR PLAN



TERRACE FLOOR PLAN





FIRST FLOOR PLAN



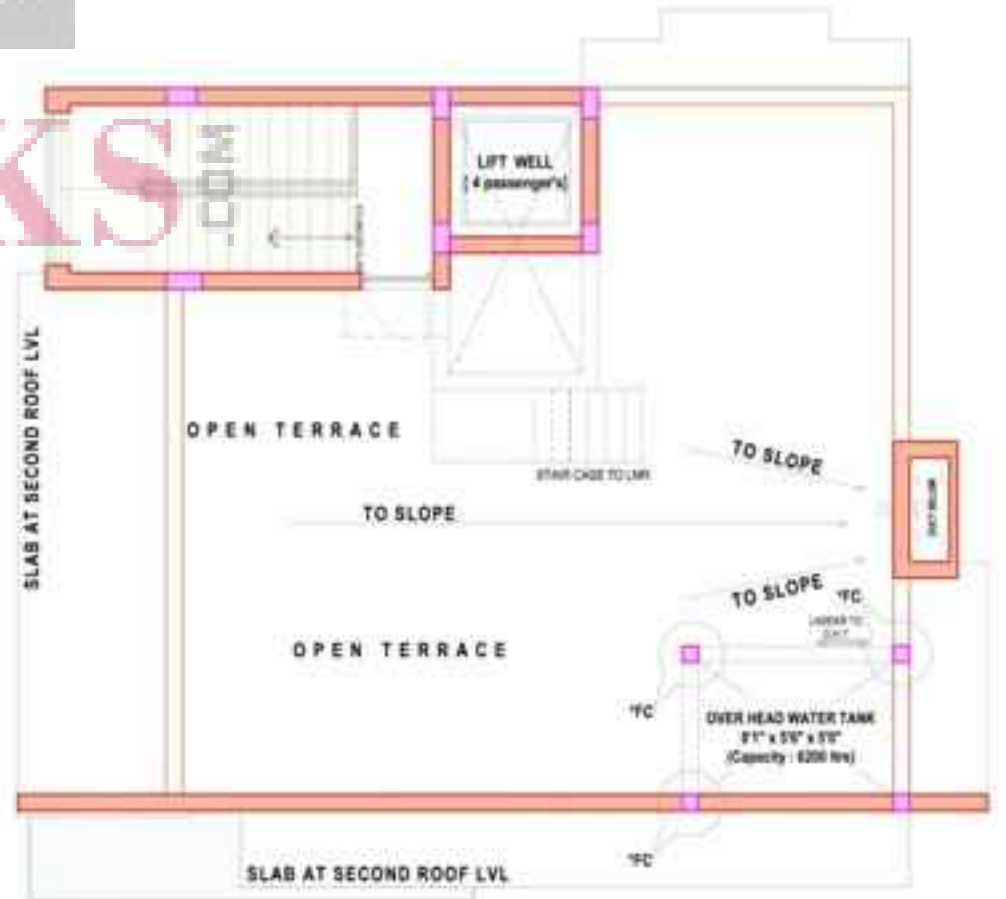
SECOND FLOOR PLAN



GROUND FLOOR PLAN



TERRACE FLOOR PLAN



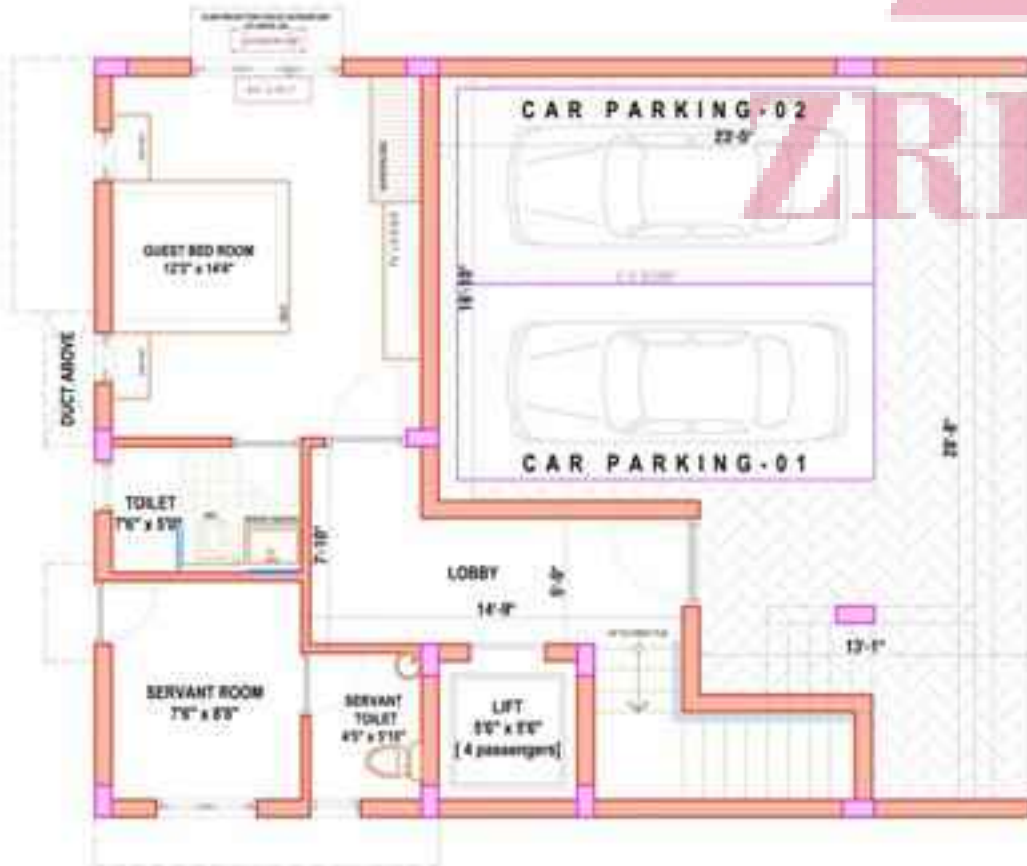
FIRST FLOOR PLAN



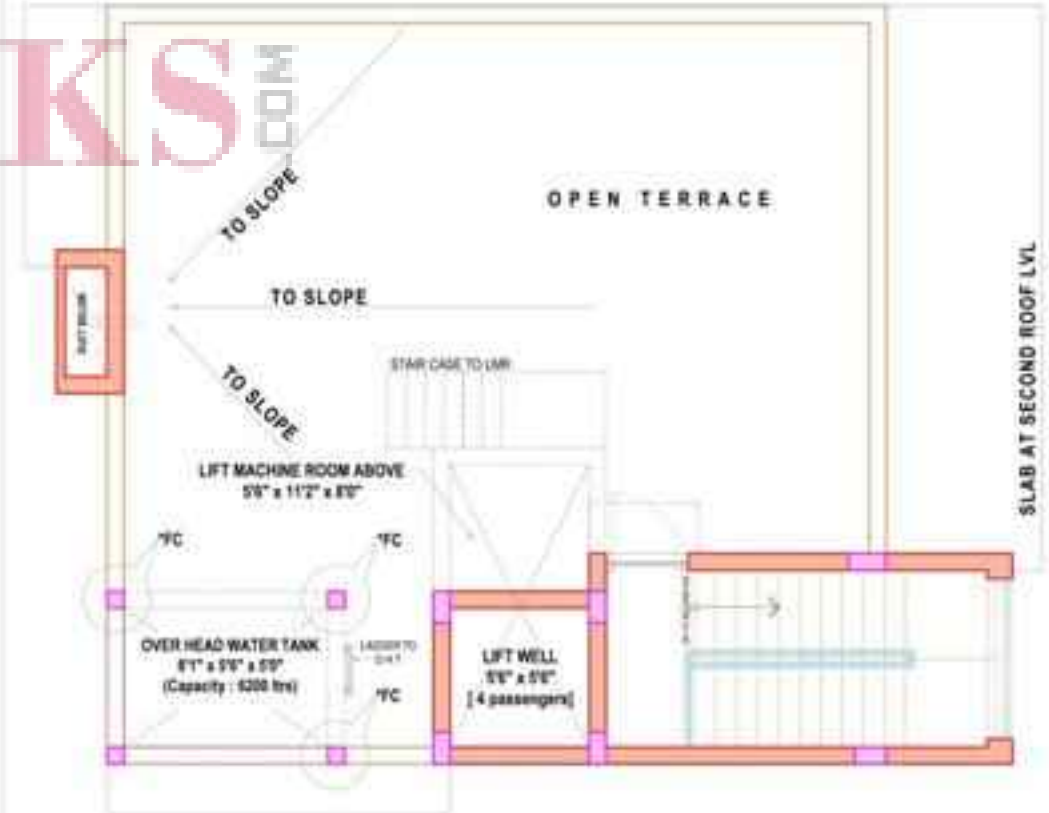
SECOND FLOOR PLAN



GROUND FLOOR PLAN



TERRACE FLOOR PLAN







Felicia



0 min  
Drag to change route.

ZRICKS

# Felicia

## I. Structure:

RCC framed structure – as per structural consultant

Porotherm/Solid Block and Plastering - as per Design

Ceiling Height 11 feet

## II. Joinery:

Main Door - Quality Teak Wood frame with Veneered Finish Doors

Bedroom Doors - Quality Teak Wood frame with Skinned Flush Doors Toilet / Balcony

Door - Quality Teak Wood frame with waterproof Plastic coated Flush Doors

Windows - UPVC windows with MS Grill and plain Glass windows

Ventilators - Aluminium adjustable louvers.

## III. Flooring:

Living, Dining - Marble

Bedrooms - 3 x 3 Vitrified Tiles

Kitchen - 3 x 3 Vitrified Tiles

Toilets / Utility - Ceramic Tiles / Anti skid Tiles

Toilet Dado - Glazed Tiles up to 8 feet

## IV. Staircase Railing:

Railing - As per architect details SS Grill with SS Pipe.

## V. Counter Top:

20mm thick Black Granite in Kitchen Counter with Dado 2 "0" Height Tiles With Stainless Steel Sink with Drain Board

## VI. Electrical:

Concealed Wiring - ISI make Omex or equivalent

Modular Switches - An or equivalent

Fan and power points and foot lamps in Bedrooms.

## VII. Plumbing & Sanitary:

Concealed CPVC pipeline in bathrooms.

PVC Rain Water, Sanitary, Waste line Ducts.

SW line for underground Drainage.

Bathrooms with bore well water.

Separate motors for sump and bore well.

C.P. Fittings - Jaquar or equivalent

Wall mounted Sanitary Fittings white in colour - Jaquar or equivalent

## IX. Painting:

External - Emulsion (Weather Coat)

Internal - Royale Emulsion with putty finish Paint.

Wood Work - Enamel Painting

Grills - Zinc Chromite non-corrosive primer with enamel paint

## X. External:

Landscaping as per Architect Details.

## XI. General:

Anti-termite Treatment

Underground sump adequate capacity

Aqua guard point in Kitchen

Washing machine inlet and outlet provision in Utility

Security system with intercom facility and Audio Door Phone - & CC T.V with DVR.

Automatic Water level Controller for pumps.

Lift Provision

2 KVA Solar Power